



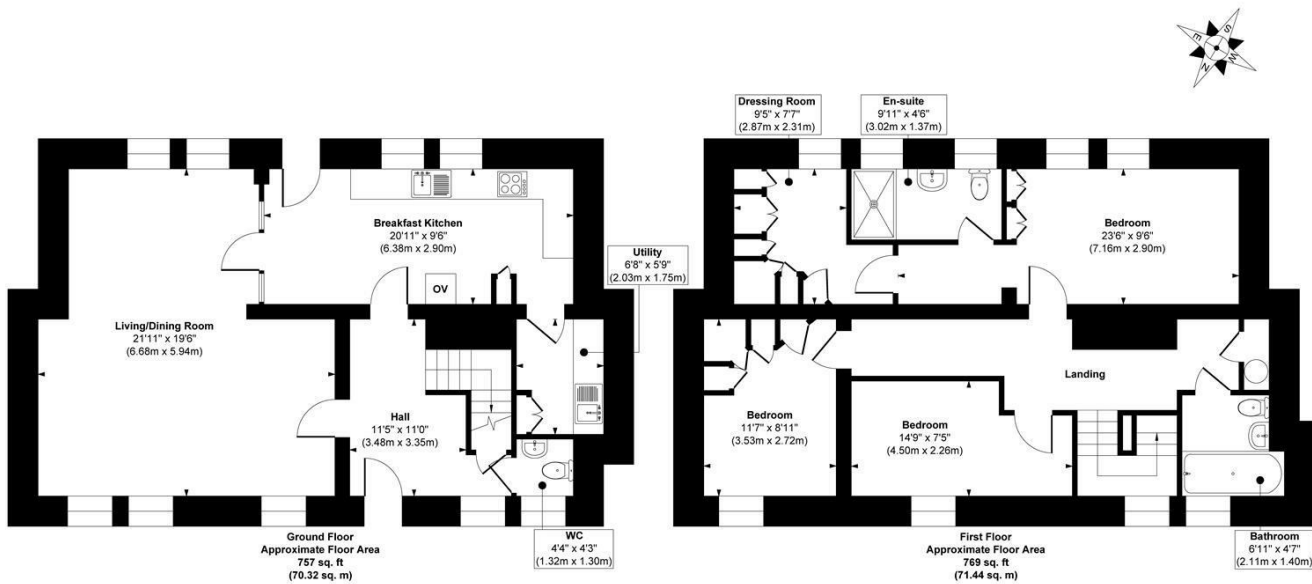
**BUTTERWICK NORWOOD DRIVE**  
ILKLEY, LS29 6GE

**£575,000**  
FREEHOLD

Prepare to be impressed. This exceptional Grade II listed home within the prestigious High Royds Estate seamlessly combines breathtaking period features with high-end contemporary design.

**MONROE**

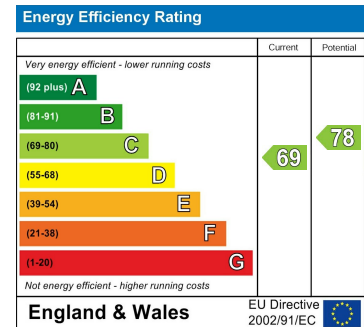
SELLERS OF THE FINEST HOMES



**Approx. Gross Internal Floor Area 1526 sq. ft / 141.76 sq. m**

Illustration for identification purposes only, measurements are approximate, not to scale.

Copyright © Show Home.



Agents Note: Whilst every care has been taken to prepare these particulars, they are for guidance purposes only. All measurements are approximate and are for general guidance purposes only and whilst every care has been taken to ensure their accuracy, they should not be relied upon and potential buyers/tenants are advised to recheck the measurements

Guiseley Sales  
3a Oxford Road  
Guiseley  
Leeds  
LS20 9AS

james@monroestateagents.com  
monroestateagents.com

MONROE

SELLERS OF THE FINEST HOMES